









COD. BFC.HOM.



Biocamino da appoggio. Struttura in ceramica. Bruciatore Circular 4 a bioetanolo in acciaio inox con potenza calorica di 0,7 kW.

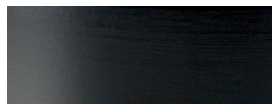
Table bio-fireplace. Ceramic structure. Circular 4 stainless steel bioethanol burner, with a heating power of 0,7 kW.

-  **Dimensioni/Dimensions:**
L/W 230 mm x P/D 150 mm x H 320 mm
-  **Peso/Weight:**
3 kg
-  **Volume imballo/Volume of packing:**
0,05 mc
-  **Durata/Burning time:**
2,5 h
-  **Potenza calorica/Heating power:**
0,7 kW
-  **Combustibile/Fuel:**
bioetanolo/bioethanol

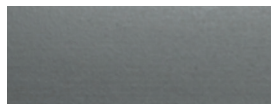
Finiture/Finishes:



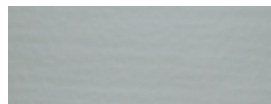
ceramica bianca
/white ceramic



ceramica nera
/black ceramic



ceramica bronzo
/bronze ceramic



ceramica argilla
/clay ceramic



No canna fumaria
/no flue or chimney needed



No odori e fumi
/no smell and smoke



No manutenzione
/no maintenance needed



Combustibile ecologico
/eco fuel